



LGX DataHub

**A world of structured
sustainable bond data
at your fingertips**

October 2023



**LUXEMBOURG
GREEN EXCHANGE**
by Luxembourg Stock Exchange



The LGX DataHub is a centralised hub of structured sustainable bond data with a remarkable level of granularity – a powerful resource that enables users to seamlessly explore, extract and compare the data of different sustainable securities, such as green bonds.

The LGX Datahub houses structured sustainable bond data on 10,000+ green, social, sustainability and sustainability-linked bonds with up to 150 structured datapoints extracted from the issuers' frameworks, Second Party Opinion (SPOs) and post-issuance reports in a harmonised format.

The tool offers search functionality and the possibility to automatically report aggregated impact and allocation for your investment portfolio.

This factsheet illustrates some of the graphs that can be generated using real data from the LGX DataHub for a fictitious EUR 137 million green bond fund investing in 121 green bonds. Graphs include an overview of Sustainable Development Goal (SDG) exposure, allocation by project categories, impact per million EUR invested, and more.

Ready to start your LGX DataHub journey or learn more? Contact our experts



Lawrence PEERAER
BUSINESS DEVELOPMENT MANAGER

T +352 47 79 36 - 614
lawrence.peeraer@luxse.com



Laetitia HAMON
HEAD OF SUSTAINABLE FINANCE

T +352 47 79 36 - 319
laetitia.hamon@luxse.com

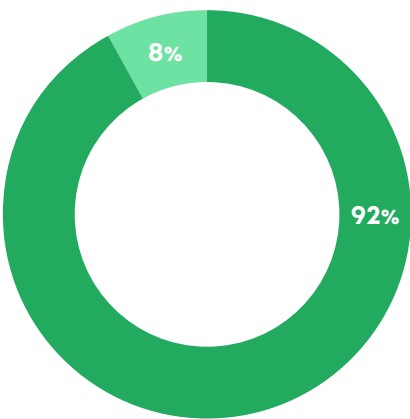
General

This fund is composed of 121 green bonds.

PRE-ISSUANCE EXTERNAL REVIEWS

92% of the bonds in the fund are covered by an external review at pre-issuance.

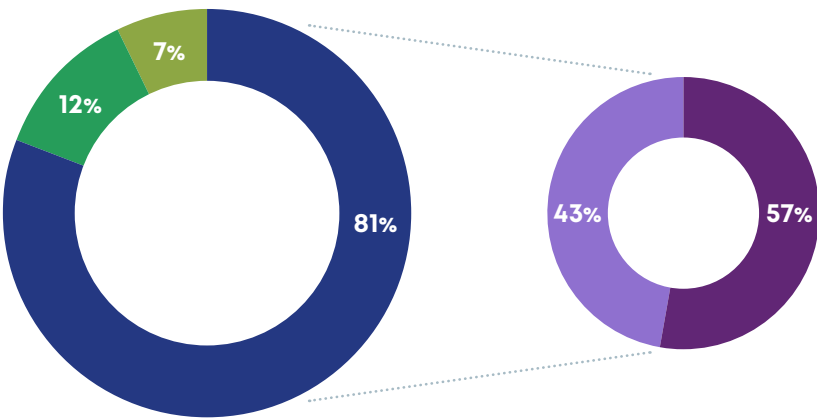
	NUMBER OF BONDS	AMOUNT INVESTED
Bonds in portfolio	121	137,500,000.00€
Of which are green bonds included in the LGX DataHub	121	137,500,000.00€



- With pre-issuance external review
- Without pre-issuance external review

POST-ISSUANCE REPORTS AND VERIFICATIONS

81% of the bonds in the fund are covered by a post-issuance report, and 57% of those are also covered by a verification.

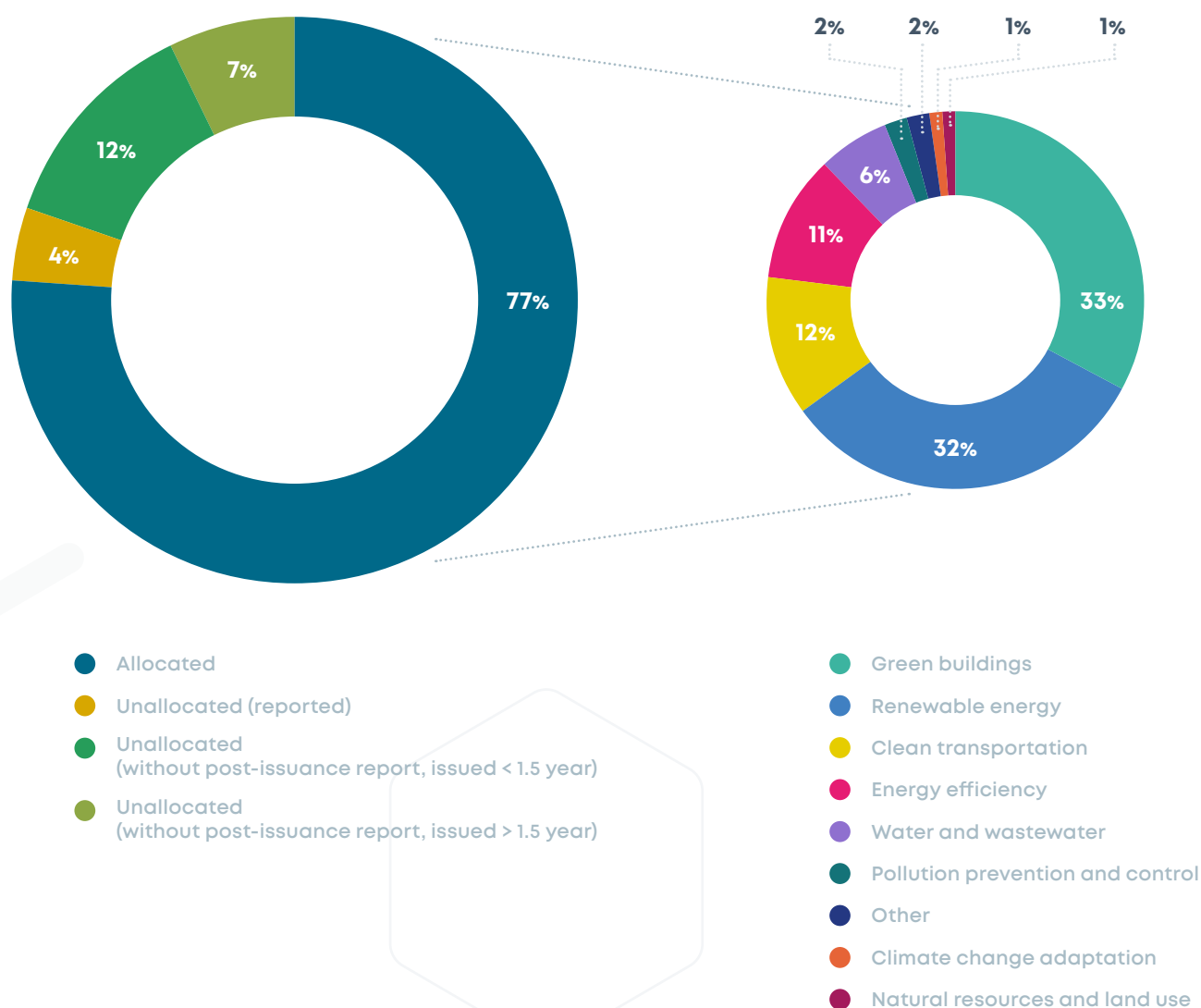


- With post-issuance report
- With post-issuance report and covered by a verification
- With post-issuance report but without a verification
- Without post-issuance report (issued < 1.5 year)
- Without post-issuance report (issued > 1.5 year)

Allocation

AMOUNT ALLOCATED BY CATEGORY

77% of the financing from the bonds in the fund have already been allocated to projects. The largest investment category is green buildings, with EUR 35.54 million invested in this area.



AMOUNT ALLOCATED BY REGION

The largest investment region is Europe with 33%.



33%
EUROPE



1%
AFRICA



4%
UNALLOCATED
(reported)



12%
ASIA



3%
OCEANIA



12%
UNALLOCATED
(without post-issuance
report, issued < 1.5 year)



12%
AMERICAS



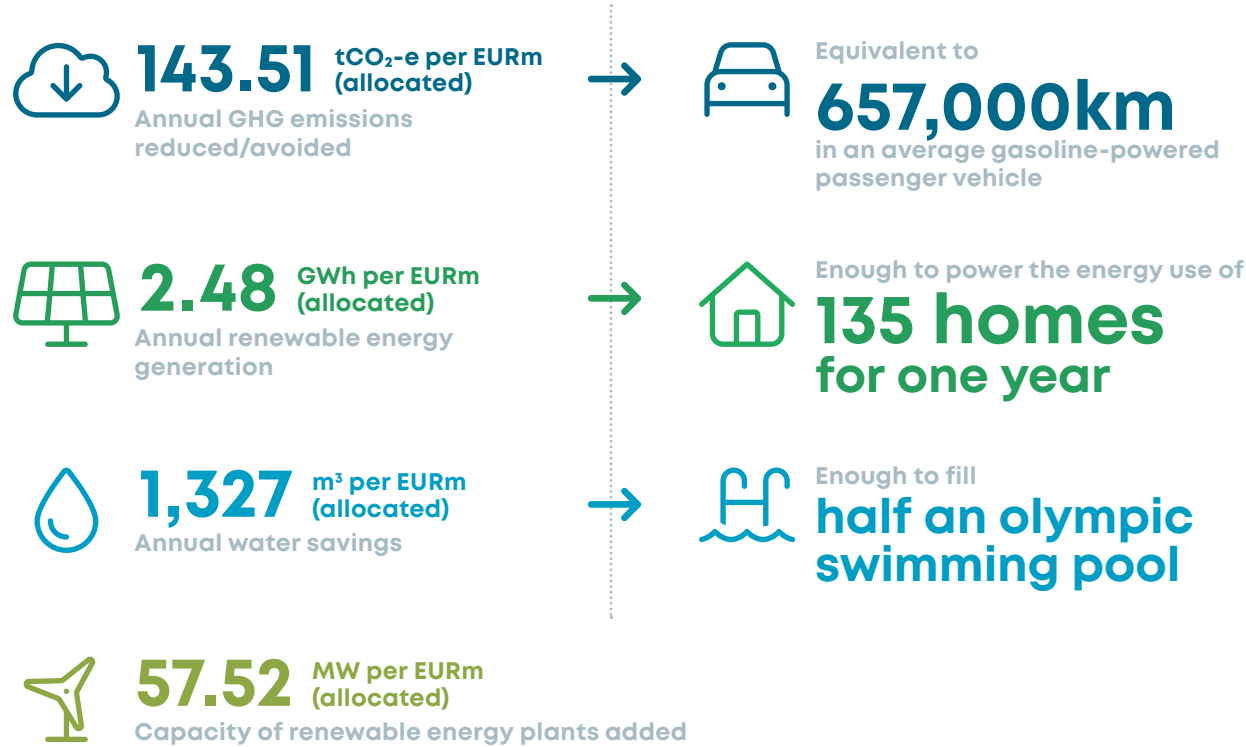
16%
OTHER
(allocated but
undefined region)



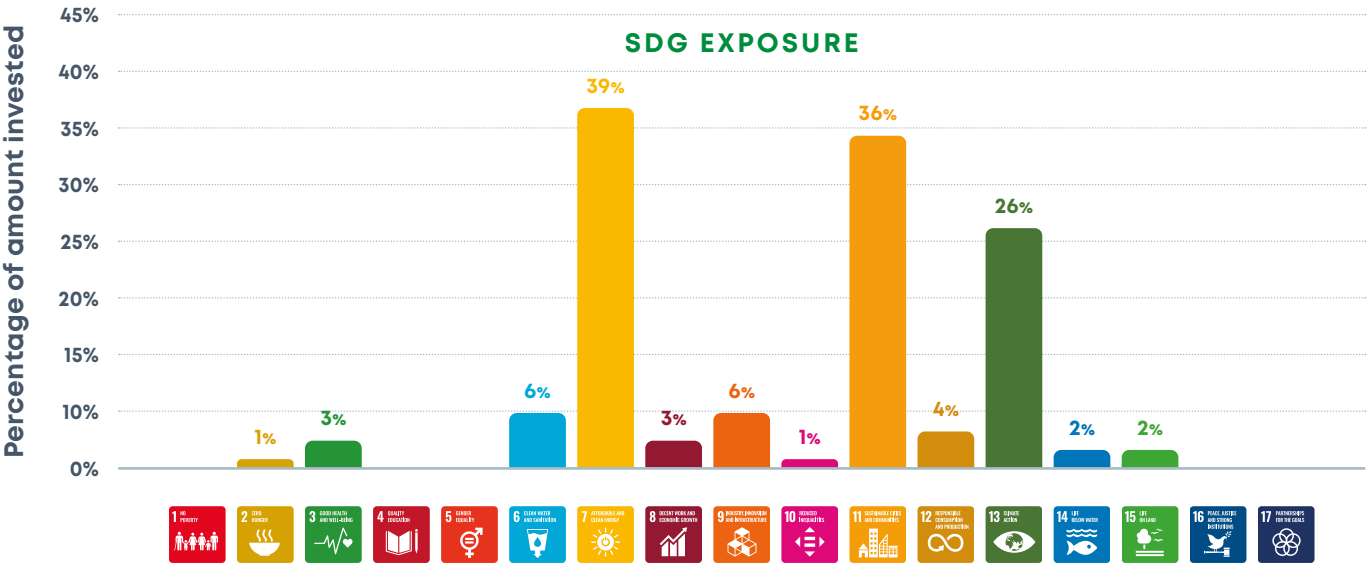
7%
UNALLOCATED
(without post-issuance
report, issued > 1.5 year)

Impact

Each million EUR invested into the fund saves 143.51 tonnes of CO₂ emissions.



Of all the SDGs, this fund contributes mainly to SDG 7 - Affordable and Clean Energy.





EU Taxonomy

EU TAXONOMY EFFECTIVE ALIGNMENT

For now only 3% of the invested amount of the fund is aligned with the technical screening criteria of the EU Taxonomy post-issuance. This is in line with the market and we expect this figure to steadily increase as we noticed an increasing number of issuers improving their frameworks and reporting.

